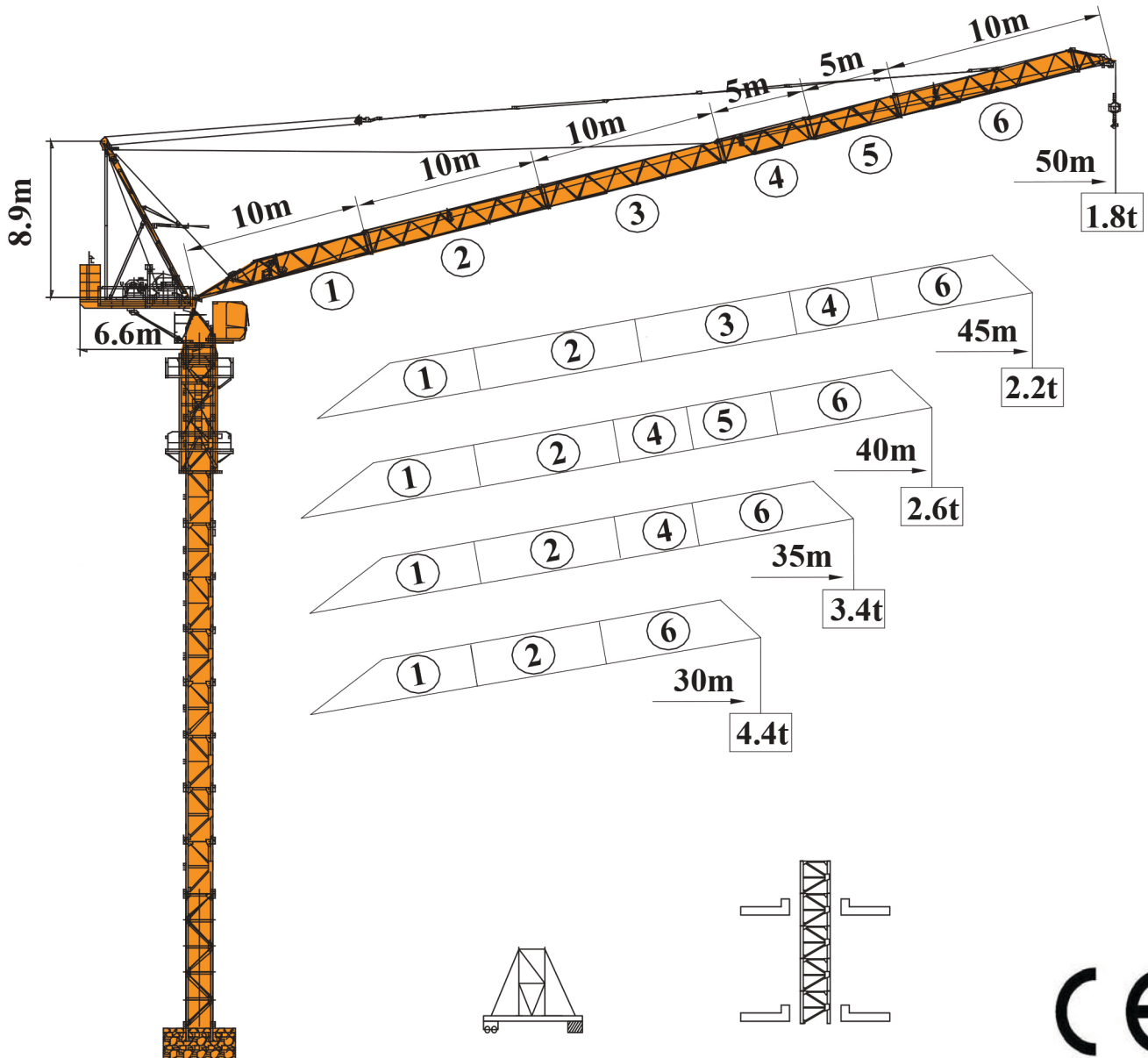
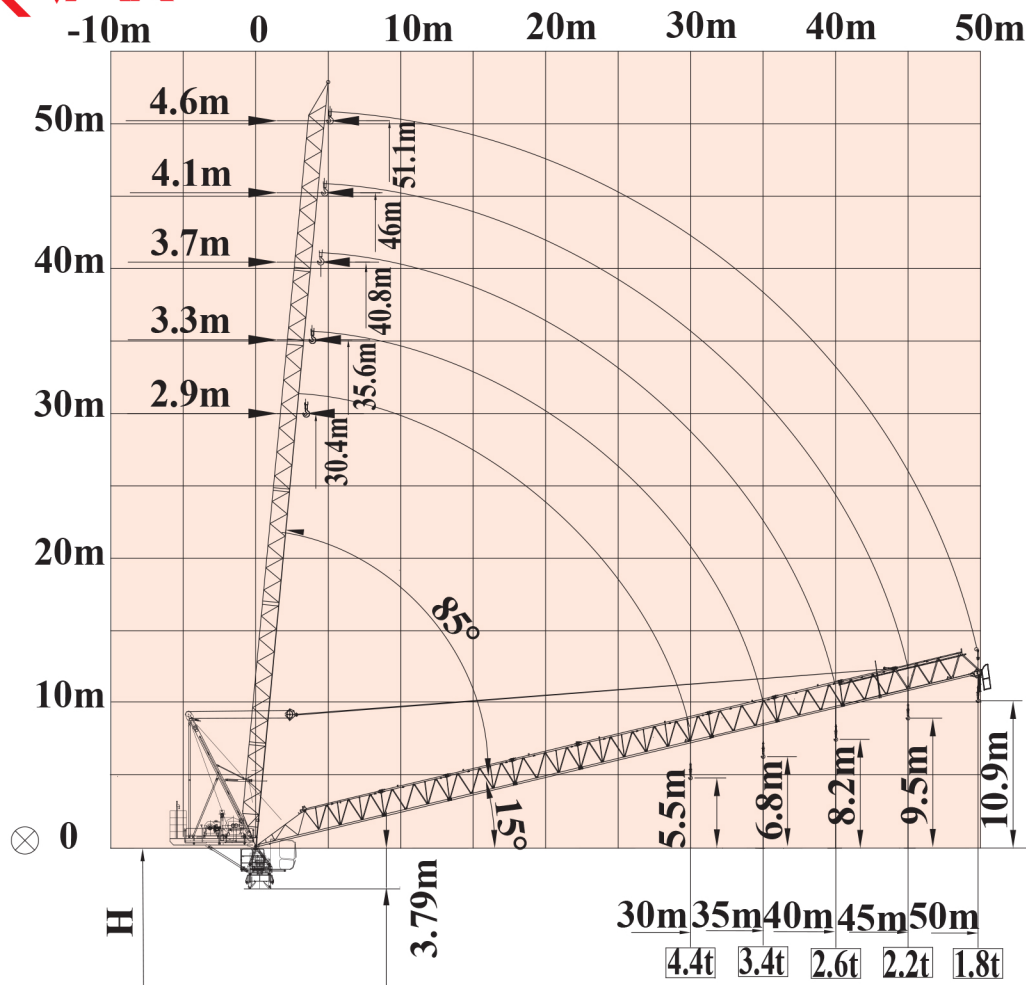




LUFFING TL126-8 (QTD126tm)



司
td.

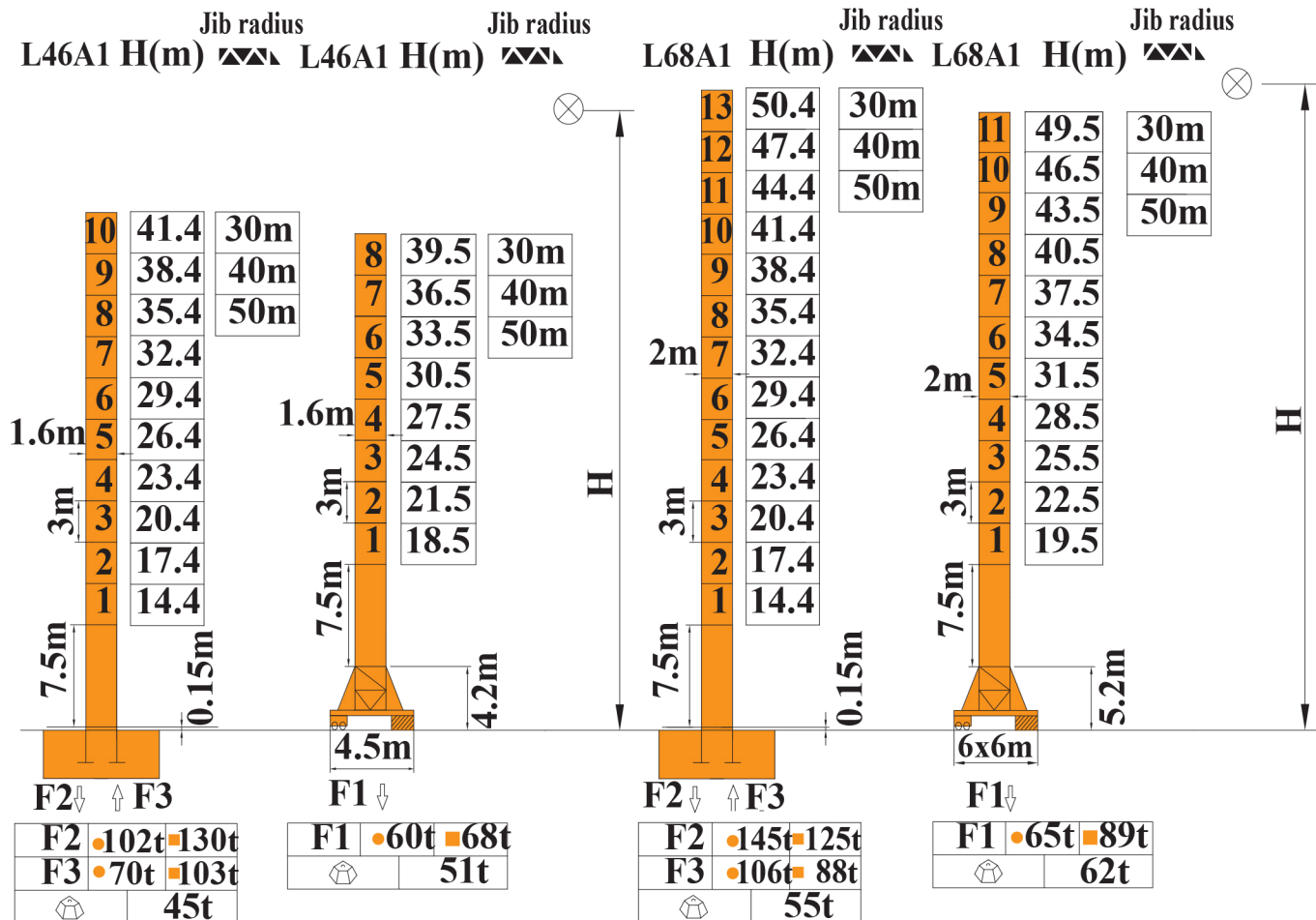


⊗ Jib hinge shaft 臂根铰点

H: Height to Jib hinge shaft 到吊臂臂根铰点高度

载荷特性 Load Diagrams

50m	3.5 →	14.8	20	23.6	30	35	40	45	50	m
		8.0	5.4	3.8	3.4	2.7	2.3	1.9	1.6	t
		4.0			3.6	2.9	2.5	2.1	1.8	
45m	3.5 →	18.6	20	25	31.5	35	40	45		m
		8.0	7.3	5.5	4.0	3.3	2.6	2.0		t
		4.0			3.3	2.6	2.2			
40m	3.5 →	18.6	20	25	32	35	40			m
		8.0	7.3	5.5	4.0	3.4	2.6			t
		4.0			3.4	2.6				
35m	3.5 →	19	20	25	30	35				m
		8.0	7.4	5.6	4.4	3.4				t
		4.0			3.4					
30m	3.5 →	19	20	25	30					m
		8.0	7.4	5.6	4.4					t
		4.0								

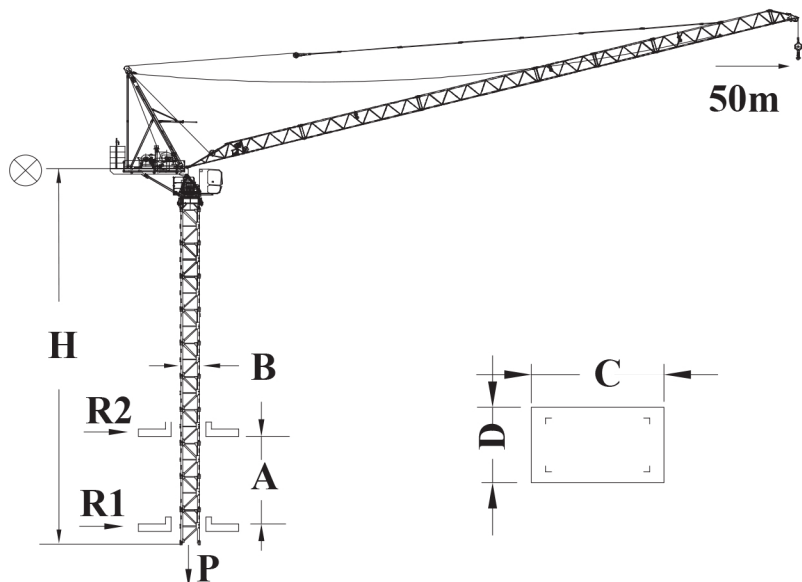
塔身截面 Mast 1.6m x 1.6m / 2m x 2m

H: Height to Jib hinge shaft 到吊臂臂根铰点高度
F 反力 Reactions

- 非工作状态 out of service
- 工作状态 in service

自重 self-load

 不带载荷及配重，
最大臂长及标准
高度时的自重

 Without load and ballast with
longest jib and self-weight in
standard height.

内爬塔机 Climbing crane


	BA675	BA45A
A	16m-21m	12m
B	2m	1.6m
C	2.58m	2.31m
D	2.17m	1.77m
H	35m	29.3m
R1	30t	26t
R2	17t	13t
P	57.5t	46t

H: Height to Jib hinge shaft 到吊臂臂根铰点高度

机构特性 Specification (Mechanisms)

机构特性 Mechanisms specification			2倍率 Two fall	4倍率 Four fall	容绳量 Drum capacity	电机功率 Motor power		
起升 Hoisting		37LVF	m/min 0-83 t 2	0-42 4	0-42 4	0-21 8	500m >500※	37kW
		45RCS20	m/min 0-80 t 2	0-40 4	0-40 4	0-20 8	400m >400※	33kW
拉臂 Luffing		30DVF	min	3 (15° - 85°)			30kW	
回转 Slewing		95RCV	r/min	0-0.68			95Nm×2	
		4SVF	r/min	0-0.8			4kW×2	
行走 Travelling		RT443	min	12.5-25			3.4kW×4	
电源 Power Supply				380V 50Hz / 440V 60Hz				
供电容量 Necessary Electric Power				95kVA				

附着示意图50米幅度 Anchorage 50m Jib Radius

※同我们协商 Consult us

